

Viktor Moskalenko

An Attacking Repertoire for White with 1.d4

Ambitious Ideas and Powerful Weapons

New In Chess 2019

Contents

Foreword	7
Chapter 1 King's Indian Four Pawns Attack	11
Four Pawns Attack – Games	19
Chapter 2 Modern Benoni Defence	47
Modern Benoni 8.♗b5+ – Games	53
Chapter 3 Snake Benoni	70
Snake Benoni – Games	72
Chapter 4 Indo-Benoni	78
Indo-Benoni – Games	80
Chapter 5 Benko/Volga Gambit	97
Benko/Volga Gambit – Games	102
Chapter 6 Grünfeld Defence	122
Grünfeld Defence – Games	125
Chapter 7 Part I: Nimzo-Indian: Sämisch and Kmoch Variations ..	162
Nimzo-Indian: Kmoch/Sämisch – Games	169
Part II: Nimzo-Indian: The Trojan Horse	204
Nimzo-Indian: The Trojan Horse – Games	206
Chapter 8 Slav Defence, Exchange Variation	214
Slav Exchange – Games	216
Chapter 9 Queen's Gambit Accepted	234
Queen's Gambit Accepted – Games	239
Chapter 10 Queen's Gambit Declined: Semi-Slav without ...♗f6 ..	263
Anti-Triangle set-up – Games	266
Chapter 11 Part I: Queen's Gambit Declined: Exchange Variation ..	274
QGD Exchange – Games	276
Part II: Queen's Gambit Declined: Exchange Variation ..	289
QGD Exchange – Games	291
Part III: Queen's Gambit Declined: Exchange Variation ..	304
QGD Exchange – Games	306
Chapter 12 Baltic Defence	318
Baltic Defence – Games	320
Chapter 13 Chigorin Defence	323
Chigorin Defence – Games	329
Chapter 14 Albin Counter-Gambit	344
Albin Counter-Gambit – Games	347
Index of variations	353
Index of players	357
Bibliography	366
A brief biography	367

Foreword

Dear chess player,

The main purpose of this creative book is to help you understand (and play) the main opening systems that arise after White's first move 1.d4. The pawn structures on both sides of the board are already determined by this first move, and these structures are what you will need to focus on first and foremost. Every specific chapter in this book will then serve as an augmentation of this basic knowledge.

An Attacking Repertoire for White with 1.d4 presents a selection of opening variations. These opening choices I have made are an important factor in my personal approach to chess.

The repertoire presented here focuses on active play supported by a powerful pawn centre.

The Four Pawns Attack against the King's Indian Defence and the moves 4.a3 and 4.f3 against the Nimzo-Indian Defence are choices in my repertoire that already featured in my earlier book *Revolutionize Your Chess* (New In Chess, 2009). After these 10 years this repertoire still stands firm, though of course all the lines have been carefully checked and updated for this project.

In the chapters on the Nimzo-Indian and the Exchange Variation of the Queen's Gambit (Nos. 7 and 11), I hope I have managed to deepen and further develop the concepts that were established earlier by the sixth World Champion, Mikhail Botvinnik (1911-1995). In those chapters you will also learn a lot about the fabulous 'Sämisch structures' (with f2-f3).



Mikhail Botvinnik at the Hoogovens tournament, 1969.

In the rest of the chapters, I have combined the knowledge I have gained through many years of experience with several modern ideas and analysis with computer engines.

This book presents 10 fundamental openings plus 4 original defensive systems for Black (Chapters 3 and 12-14), which complement those basic openings but are included mainly for their surprise value (note: for anti-Dutch lines for White, see my book *The Diamond Dutch*, New In Chess 2014).

Strategies for the white player in 1.d4 openings

- You will have to sacrifice material more often than accept sacrifices by your opponent. However, there are some exceptions, such as in the Albin Counter-Gambit (Chapter 14), where Black simply insists too much!
- If Black chooses an opening with a fixed pawn centre (1.d4 d5), then it is important for White to pay special attention to the placement of his pieces.
- Conversely, if Black's play is aimed at controlling the centre with his pieces (1.d4 ♘f6), the assimilation of the pawn configuration has a key importance, since the set-up of the pieces will follow naturally from this step.
- Of course, in our repertoire, the attack is not a universal panacea against all of Black's opening choices. In some cases, the clearest path to success will be a transposition to a favourable endgame.

Do not forget that you are also an active participant in the creative process and the development of the opening systems proposed in this book!

I would like to wish you great success in your future chess battles!

Grandmaster Viktor Moskalenko
Dubai/Barcelona, May 2019

Six Symbols



TRICK: hidden tactics and some tricky ideas, e.g. traps you can set and pitfalls you have to avoid.



PUZZLE: possible transpositions, move order subtleties, curiosities and rare lines.



WEAPON: the best lines to choose; strong or surprising options for both attack and defence, which deserve attention.



PLAN: the main ideas for one of the sides in the next phase of the game.



STATISTICS: winning percentage for a line or for either side/player.



KEEP IN MIND: here, fundamental ideas for either side are given.

CHAPTER 2

Modern Benoni Defence

The Taimanov Attack in the past and future

1.d4 ♘f6 2.c4 c5 3.d5 e6 4.♗c3 exd5 5.cxd5 d6 6.e4 g6 7.f4 ♕g7 8.♖b5+



Nautilus is the future, gentlemen! – Captain Nemo.

8.♖b5 is a powerful check! For many years, this strong resource has remained the chief weapon of numerous players against the Modern Benoni. Among other advantages, White's idea is simply to gain one tempo.

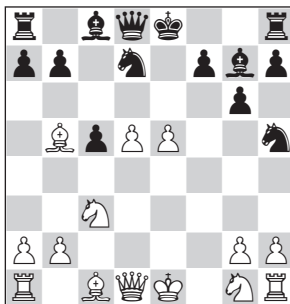
In this chapter I would like to present some original ideas in the aggressive Taimanov or Four Pawns Attack that, in my opinion, have not yet been well-developed or sufficiently analysed by modern theory.



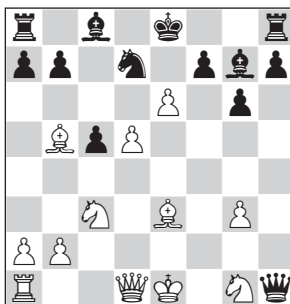
Mark Taimanov.

My opinion on 8.♖b5+ ♗bd7

8...♗fd7 is Black's main defence against 8.♖b5 in the Taimanov Variation. No good is 8...♕d7? because of 9.e5!, with a large advantage for White. The move 8...♗bd7, however, is more natural, although it gives White the possibility of a frontal attack with 9.e5! (White has to start his tactics immediately, since without this move Black can develop comfortably) 9...dxe5 10.fxe5 ♗h5.



Now 11.e6! is the main and principled line: 11...Rh4+ 12.g3 Nxc3 13.hxg3 Qxh1 14.Qe3.



As recent games (and analyses) show, Black's position is completely hopeless.

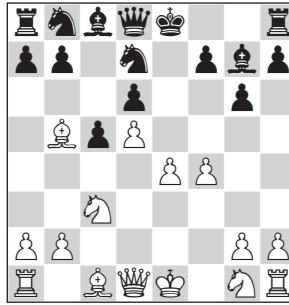
See Game 10: Peralta-Lacasa Diaz, Catalonia tt 2014.

A bit of history

In the year 1988 (!) I received an invitation to play in an interesting closed tournament for promising young players in Yerevan, the capital of Armenia. During my preparation, I realized that against 1.d4 almost all participants (including myself) had in their repertoire the Modern Benoni Defence, which was very popular at the time. This forced me to dedicate some time to the study of this creative opening and to prepare an interesting and effective idea...

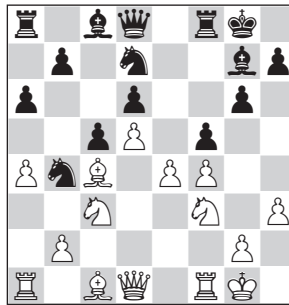
Three alternatives

The position after 8...Nfd7 was the focus of my studies before I started in the tournament in Armenia. The black pieces do not look very active at the moment, because White has spent more time on his development. But the bishop does not do anything either on b5 and will soon be attacked there.



Now we have many options. How to continue?

A) There is GM Lutikov's advance 9.a4, preventing Black's counterplay with ...a7-a6 and a quick ...b7-b5. I did not like this very much, because the b4-square is weakened and a black knight can be comfortably placed there. 9...0-0 10.♘f3 ♘a6 11.0-0 ♘b4 12.h3 (or 12.♖e1 a6 13.♙f1 ♗e8 14.h3 f5!?) 12...a6 13.♙c4 f5!N.



An important novelty in a well-known position. This is one of the main ideas solving the central problems in the Benoni. I think this move will have a bright future – A.Kapengut, 2002.

But anyway this retort has always been fashionable, thanks to the fact that it was used by Garry Kasparov in several games;

B) Worthy of attention is 9.♘f3 a6 10.♙e2 b5, with an unclear position (recently analysed in various books);

C) Taimanov's move is 9.♙d3, for example: 9...0-0 10.♘f3 ♘a6 11.0-0 ♘c7 12.♘d2 ♘f6 13.h3 ♗e8 14.♗f3 ♗b8 15.a4 ♘a6 16.♘c4 ♘b4 17.♙b1 a6 18.a5 ♙f8 19.f5 ♙e7 20.fxg6 fxg6 21.e5 dxe5 22.d6 ♙xd6 23.♘xd6 ♗xd6 24.♘e4 1-0 Taimanov-Trifunovic, Leningrad 1957.

Whatever the case may be, I can assure you that each of these plans has its advantages and weak points.

The idea behind 9.♙e2!?

After analysing the well-known practical examples (please note that in 1988 there were no personal computers yet and until 1995 I studied at the

board, using books and magazines – and my own head!) I soon realized that the secret of this position is based on the fact that in general, Black's counterplay is very dynamic, depending on what White plays next. There are enough resources for both sides.

But what I liked was the suggestion of **9. ♖e2!?**.



This continuation seems very flexible and corresponds to my approach to openings: look for paths that are studied little and used rarely and that contain original hidden plans.

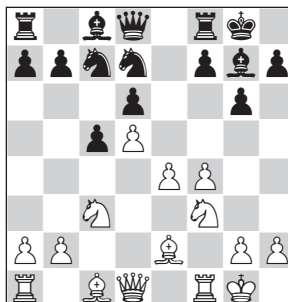
Typical black plans

By putting his queen's knight on a6 Black starts a common plan in the Benoni. One is to try the advance ...b7-b5: ...♞c7, ...♝b8, ...a7-a6, ...b7-b5. If now (or also earlier) 10...♞f6?!, White gains a clear tempo compared to the theoretical positions (see examples in Game 11 and Game 14)!

One of the insoluble problems for Black in the Taimanov Variation is where to put these crazy knights (see also the comment to 15...♞a6 in Game 14)!

The CapNemo plan

After **9. ♖e2 0-0 10. ♘f3 ♞a6 11. 0-0 ♞c7** we reach another key moment.



12.♘d2 used to be a popular continuation, but I believe that 12...f5 is an important resource for Black here. 12.♖h1!? is also played, with the idea to prepare the advance f4-f5.

But when I analysed this position more deeply, I found that White has another interesting plan: **12.♙d2!?**. This might be called the ‘CapNemo Plan’, after several Internet wins with it by myself under that handle.



The queen’s bishop will be manoeuvred to the h4-square, or to g3, from where it can support the typical break e4-e5.

In Game 11, Moskalenko-Minasian, my rival found it was difficult to solve all the problems that arose in the opening, and in the short middlegame struggle White dominated from the start, displaying good knowledge of the strategic plans and tactical resources.

In Game 12, Moskalenko-Makarevich, we will investigate the 12.♙d2!? plan more deeply. Here we observe other ways to go wrong for Black, due to errors at critical moments. Perhaps his best chance was ...f5!? on move 16 or 18, with a complicated game, although we should not forget that in the 1980s and ’90s all resources of these positions were not known yet. More recent games are found in Game 13, Moskalenko-Sanz Alonso.

As for 12.a4!?, this move often only transposes to known positions. It is an alternative to 12.♙d2!?, but the plans are very similar. It is possible that this advance is more reasonable here than on move 9, since Black now needs more time to take the knight to the b4-square: ...♞b8-a6-c7-a6-b4.

In Game 14, Moskalenko-Magerramov, we find more illustrative examples, along with other attempts and plans. After resigning this game, my opponent commented to me: ‘It seemed as if I was lost from the beginning; 8.♙b5 and what you played immediately afterwards is a deadly plan.’ I still agree with this evaluation.



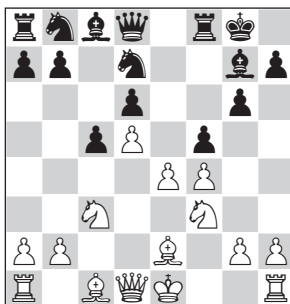
KEEP IN MIND

Due to the fact that there are quite typical moves in the opening, some games can transpose one to the other (Games 11-14).

Other plans for Black

Another plan for Black is **9/10...♖h4+**. The main idea of this check is to weaken White's kingside structure. However, Black is wasting important time. With this option we transpose to a game by a student of mine. During the same tournament in Yerevan, I taught the idea of **9.♗e2** and **♗d2** to my student, IM Stanislav Savchenko, who soon used it successfully in his games. See S.Savchenko-Pigusov (Game 15). Recent games of my own with **9...♖h4+** are Moskalenko-Fernandez Vicente (Game 16) and Moskalenko-Almeida Quintana (twice in Game 17).

In Game 18 we will examine an interesting option for Black: **9...0-0 10.♗f3 f5!?**



A blow to the white centre! This move (in similar positions) was used by World Champion Tigran Petrosian and later by his colleague Veselin Topalov. It is a push rich in resources, well-known in the Modern Benoni and in similar structures.

In this case, Black takes advantage of the position of his knight on d7 to advance the f-pawn. Strangely enough, after **11.exf5 gxf5**, practice has seen only one game with this position: Ezat-Ghaem Maghami (Game 18).

Modern Benoni 8. ♘b5+ – Games

My opinion on 8... ♘bd7

Game 10

Alexander Fernando Peralta 2603

José Antonio Lacasa Diaz 2411

Catalonia tt 2014 (2)

1.d4 ♘f6 2.c4 c5 3.d5 e6 4.♘c3 exd5
5.cxd5 d6 6.e4 g6 7.f4 ♙g7

🔪 **WEAPON:** 7... ♖e7 is an attempt to discourage e4-e5: 8.♘f3 ♙g4 (8... ♘xe4?? 9.♖a4+) 9.e5!? (9.♙b5+ ♘bd7 10.0-0±) 9... dxe5 10.d6 ♖e6 (10... ♖xd6 11.♖xd6 ♙xd6 12.♘b5±) 11.♖a4+ ♘c6 12.♙c4 ♖d7 13.♘xe5 (13.♘g5!±) 13... ♘xe5 14.fxe5 ♖xa4 15.♘xa4 ♘d7 16.♙f4 ♙g7 17.♙b5± Utesch-Daurelle, chessfriend.com 2004.

8. ♙b5+!

Throughout the entire history of this variation, this move has traditionally been considered dangerous for Black.

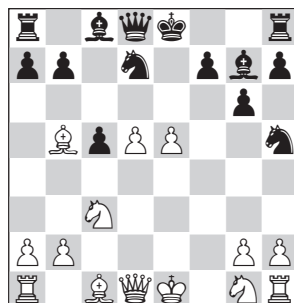
8... ♘bd7

This move, more natural than ... ♘fd7, aroused some interest – however it is insufficient to achieve equal chances. Practice from recent years suggests that this evaluation might need amendment.

9.e5 dxe5

9... ♘h5 10.e6 ♖h4+ 11.♙f1 is just losing for Black.

10.fxe5 ♘h5



11.e6!

The calmer natural move 11.♘f3 leads to an equal game after 11...0-0 12.♙g5 (12.g4 ♘xe5! 13.gxh5 ♘xf3+ 14.♖xf3 ♖h4+ 15.♙d2 c4!-+) 12... ♖b6 13.♖e2 a6 (13...f6 14.exf6 ♘dxf6=) 14.♙xd7 ♙xd7 15.0-0-0 f6 16.exf6 ♘xf6 17.♖d2 ♖ae8=.

11... ♖h4+

🔪 **WEAPON:** 11...fxe6 12.dxe6 0-0 13.exd7 (13.♘f3!? ♙xc3+ 14.bxc3 ♘df6 15.♖xd8 ♖xd8 16.e7+–) 13... ♖h4+ 14.g3 ♙xc3+ 15.bxc3 ♖e4+ 16.♖e2 ♖xh1 17.♙e3+–.

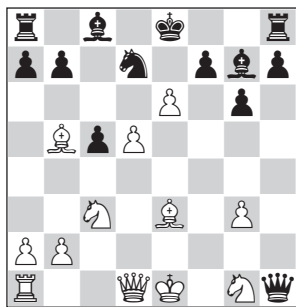
12.g3!

After 12.♙d2?! fxe6 13.dxe6 0-0 14.exd7 ♙xd7 15.♙xd7 ♖f2+ (15... ♙xc3+!?) 16.♘ge2 ♖d8 Black has enough compensation.

12... ♘g3 13.hxg3

13.♘f3!? ♙xc3+ 14.bxc3 ♖e4+ 15.♙e2 ♘xh1 16.exf7+ ♙e7 17.d6+ ♙f6 18.c4 (Kruppa-Berelovich, Donetsk 1998) 18... ♙g7! =.

13... ♖xh1 14.♙e3!



The key position.

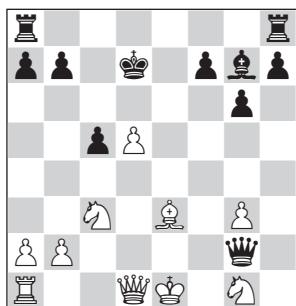
14...♙xc3+

Only this idea is worthy of attention.

WEAPON: 14...0-0 15.exd7 ♙xd7 16.♙xd7 ♖ae8 17.♙xe8 ♖xe8 18.♖e2 ♙d4 (18...♙h6 19.♗f1 ♖xe3 20.♗g2+-) 19.0-0-0! ♖xe3 20.♗d2 ♖h5 21.♘ge2 ♗g5 22.♗b1 ♙f6 23.d6 c4 24.♗d5 1-0 Draba-Zorzopulos, IECG email 2000;

WEAPON: 14...a6 15.exd7+ ♙xd7 16.♙xd7+ ♗xd7 17.♗a4+ ♗d8 (17...b5 18.♘xb5+-) 18.0-0-0 ♖e8 19.♙g5+! f6 20.♙f4 (20.♗f4!?) 20...♗e7 21.♖e1+ 1-0 Sadewasser-Wesseln, Germany tt 2000/01;

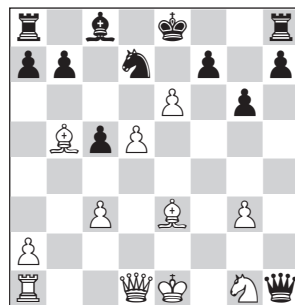
WEAPON: 14...♗g2 15.exd7+ ♙xd7 16.♙xd7+ ♗xd7



analysis diagram

17.♗g4+!? (17.♗a4+ is quite similar) 17...f5 18.♗a4+ ♗c8 (18...♗d8 19.0-0-0 ♙xc3 20.bxc3 ♗xg3 21.♙d2+-) 19.0-0-0 ♙xc3 20.bxc3 ♗xg3 21.♙xc5 ♗xc3+ 22.♗b1 ♗xc5 23.♖c1+- Molo-Ramirez, ICCF email 2005.

15.bxc3



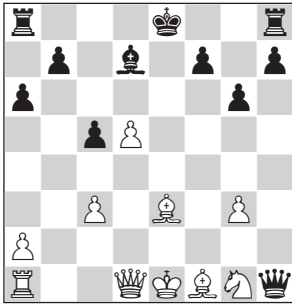
15...a6

WEAPON: 15...♗e4 leads to a favourable endgame for White: 16.♗d3!?. This move allows White to keep more pieces and pawns on the board (16.♗f3 ♗xf3 17.♘xf3 fxe6 18.dxe6 a6 19.exd7+ ♙xd7 20.♙xd7+ ♗xd7 21.0-0-0+ is still playable for Black). 16...♗xd3 17.exd7+ ♙xd7 18.♙xd3 b6 19.♙g5!? (19.♙h6!?) 19...0-0 20.♙f6! ♖fe8+ 21.♗f2± b5 22.♘f3 ♖ab8 23.♘e5 ♙h3 24.♘c6 ♖b6 25.♙e2 h5 26.♙f3 ♖a6 27.a3 ♙d7 28.♙e5!+- Sage-Simeonov, ICCF email 2011.

16.exd7+ ♙xd7 17.♙f1!

It's less convincing to play the endgame after 17.♙xd7+ ♗xd7 18.♗g4+ (18.♗b3 b5 19.0-0-0 ♖he8

20. ♖xc5 ♖g2∞) 18...f5 19. ♖f3 ♖xf3
 20. ♗xf3 ♖he8 21. ♖f2 ♖e4 22. ♗g5!?
 ♖c4 23. ♗xh7 ♖h8 24. ♗f6+ ♖d6
 25. ♖e1 ♖f8 26. ♖g5 ♖xf6 27. ♖xf6
 ♖xd5 and there is still a lot of
 technical work ahead, Pantazi-
 Trofimov, ICCF email 2013.



17... ♖e4

🔪 **WEAPON:** 17...0-0 18. ♖f2
 ♖e4 19. ♖xc5 ♖fc8 20. ♖d4
 ♖c2+ 21. ♗e2 ♖b5 22. ♖c1
 ♖xa2 23. ♖e7 ♖c4 24. ♖e3
 ♖c7 25. d6+- Zylla-Cilloniz
 Razzeto, ICCF email 2013.

18. ♖f3N

🔪 **WEAPON:** 18. ♖d3!? ♖f5
 19. ♖xe4+ ♖xe4 20. c4±
 Myers-Lehnhoff, IECG email
 2006.

18... ♖xf3?

18... ♖e7 19. ♖f2±.

19. ♗xf3+- 0-0

19...b6 20. ♗e5+-; 19...♖c8 20. ♖f2 f6
 21. ♗d2+-.

20. ♖xc5 ♖fe8+ 21. ♖f2 ♖ac8

22. ♖d4 ♖b5 23. ♖d1

Black resigned.

After 8... ♗bd7 Black has a difficult
 position, but it requires precision
 from White to capitalize on it.

The customary Benoni plan – 9. ♖e2 0-0 10. ♗f3 ♗a6

Game 11

Viktor Moskalenko

2440

Artashes Minasian

Yerevan 1988

1. d4 ♗f6 2. c4 c5 3. d5 e6 4. ♗c3 exd5
 5. cxd5 d6 6. e4 g6 7. f4 ♖g7 8. ♖b5+!
 ♗fd7

This is Black's main defence against
 the Taimanov Attack.

🔪 **WEAPON:** No good is 8... ♖d7?!



analysis diagram

because of 9.e5! with a
 clear advantage for White:
 9... ♗h5 10. ♗f3 0-0 11. ♖xd7
 ♖xd7 12. 0-0 ♗a6 13. ♗e4!
 dxe5 14. fxe5 ♖ae8 15. ♖e1±
 Marques-Del Bosco, Sao Paulo
 1997.

9. ♖e2!?

For other possibilities see the
 introduction.

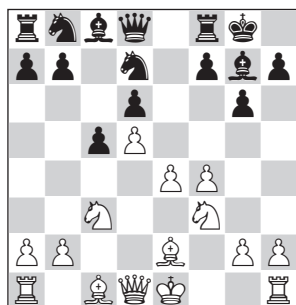
9...0-0

At the moment this is the most
 natural, but there is a possibility to
 give check, 9... ♖h4+, that we will
 see later (Games 15-17).

10. ♗f3



GM Artashes Minasian. All his life he has been one of the greatest devotees of the Modern Benoni on the black side.



This is the critical position of this variation.

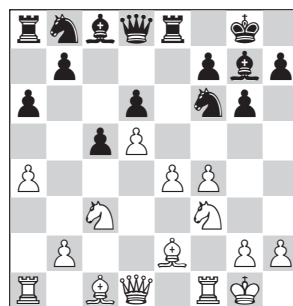
10...♟a6

This knight manoeuvre introduces a customary Benoni plan. One possibility is to try and carry through the ...b7-b5 advance with ...♟c7, ...♞b8, ...a7-a6, and ...b7-b5.

♟ WEAPON: If now or at a later stage 10...♟f6?!, White can gain a clear tempo in comparison with the theoretical positions: 11.0-0 ♟g4 (11...♞e8 12.e5!; 11...♟bd7 12.♞e1!) 12.e5!? (12.h3!? ♟xf3

13.♟xf3±) 12...♟xf3 (12...dxe5 13.fxe5 ♟fd7 14.♟g5!) 13.♟xf3 dxe5 14.fxe5 ♟fd7 15.e6 ♟e5 16.♟g4!± Moskalkenko-Anastasian, Sverdlovsk 1987. More examples:

♟ WEAPON: 10...a6 11.a4 ♟f6 (11...♞e7 12.0-0! ♟xc3 13.bxc3 ♞xe4 14.c4+- Kasparov-COMP Super Constellation, Hamburg 1985) 12.0-0 ♞e8



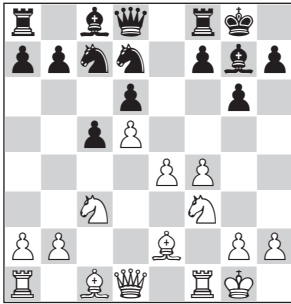
analysis diagram

13.e5! dxe5 (13...♟g4 14.h3 ♟h6 15.♟e4 ♟f5 16.♟c4+- CapNemo-Gyalog, Internet 2007) 14.fxe5 ♟g4 15.♟g5! ♞b6 16.a5 ♞xb2 17.♟a4 ♞b4 18.♟b6+- Moskalkenko-Hidalgo Santana, San Sebastian de La Gomera 2007;

♟ WEAPON: 10...♟xc3+?! 11.bxc3 ♟f6 12.e5! dxe5 13.fxe5 ♟xd5 14.♟g5 ♞d7 15.♞d2 ♟c6 16.♞d1+- Moskalkenko-Munoz Pantoja, Sant Marti 2011;

♟ WEAPON: 10...♞e8 11.0-0 ♟f8?! 12.e5 (12.♟d2!?!; 12.f5!?) 12...♟bd7 13.♟g5 dxe5 14.f5! Moskalkenko-Perenyi, Budapest 1988.

11.0-0 ♖c7



12. ♟d2!?

Another key moment. Here White has the interesting plan to bring the bishop to the h4- or g3-square. From there the bishop can support the typical e4-e5 break – see also Games 12 and 13.

PUZZLE: For transpositions: 12.a4!?, see Games 13 and 14. Earlier, the popular continuation was 12.♘d2 but I believe that here 12...f5! is an important resource for Black that works well: 13.♘c4 ♟d4+ (13...♘b6 14.e5!?, Ryskin-Skrobek, Wisla 1992, is unclear; 13...fxe4! 14.♘xe4 ♘b6⇒ Akesson-Hardstam, Hallsberg 1998) 14.♖h1 ♘b6 15.e5 ♘xc4 16.♟xc4 b5 17.♘xb5 ♘xb5 18.♟xb5 dxe5 19.♟c6 ♖b8 (19...♟a6∞) 20.fxe5 ♟xe5 21.d6 ♖g7⇒.

Another interesting option, 12.♖h1!?, has been played, with the idea to prepare the advance f4-f5. But it is easier for Black to find a defence with such direct play. For instance: 12...♖b8 13.a4 a6 14.f5 b5 15.♟g5 ♖e8 16.e5 ♘xe5 17.f6 ♟h8∞ Ivanisevic-Donchenko, Biel 2015.

12...♖e8

For 12...♖b8 see Game 12 below. In this variation it is always necessary to study the possibility of 12...f5.

13. ♖c2

13.a4 transposes to Game 14.

WEAPON: 13.♟e1!? is still not much explored: 13...♟xc3 (13...b5 14.e5 ♘b6 15.♘xb5± Reichert-Viard, ICCF email 2011) 14.bxc3 ♖xe4 15.f5 ♘e5∞ 16.♘xe5 ♖xe5 17.fxg6 hxg6 18.♟f3∞.

13...♘f6

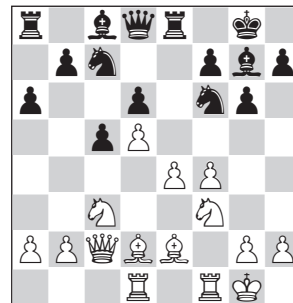
WEAPON: 13...♖b8 14.a4 b6 15.♟e1! a6 16.♟h4! CapNemo-Arkhangelsk, Internet 2007.

14. ♖ad1!?

Mobilizing the major pieces for the battle.

14...a6

Too slow. 14...♖e7 15.♟d3!?, 14...b5 15.e5!?



15.e5!?

This advance is one of the most important means for White to attack the black structure. 15.♟c1! also deserves to be considered.

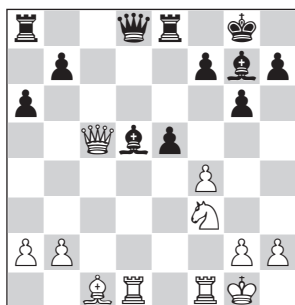
15...♘fxd5

15... ♖f5 16. ♗d3 (16. ♖b3!?±)
 16... ♗xd3 17. ♖xd3 dxe5 18. fxe5±.
16. ♗xd5 ♗xd5 17. ♗c4! dxe5?
 17... ♗e7□.



TRICK: 17... ♗e6? 18. f5!
 gxf5 (18... ♗xf5 19. ♖b3+--)
 19. ♗g5+--.

18. ♗c1!
 18. ♗e1!?.
18... ♗e6 19. ♗xd5 ♗xd5 20. ♖xc5+--



The rest is merely a matter of technique.

20... ♖c8 21. ♖xd5 ♖xd5 22. ♖xd5 e4
23. ♗d4
 23. ♗e5!?.
23... e3 24. ♖e1 ♖c4 25. ♗b3 ♖c2
26. ♗xe3 ♖xb2 27. ♖d2 a5 28. ♖xb2
♗xb2 29. ♗d2 ♖xe1+ 30. ♗xe1 a4
31. ♗a5 b5 32. ♗c6 ♗g7 33. ♗f1 ♗f6
34. ♗a7 ♗f5 35. g3 h5 36. ♗xb5 h4
37. ♗g2 hxg3 38. hxg3 g5 39. fxg5
♗xg5 40. ♗f3 ♗f5 41. ♗c3 ♗c1
42. a3 ♗e6 43. ♗b4 ♗d5 44. ♗c3+ 1-0

Game 12

Viktor Moskalenko 2440
V.K. Makarevich
 Yerevan 1988

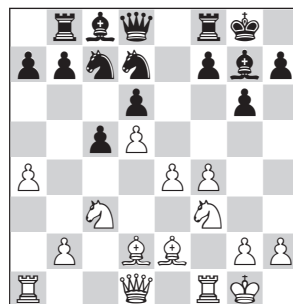
1.d4 ♗f6 2.c4 c5 3.d5 e6 4. ♗c3 exd5
5.cxd5 d6 6.e4 g6 7.f4 ♗g7 8. ♗b5+!

♗fd7 9. ♗e2!? 0-0 10. ♗f3 ♗a6
11.0-0 ♗c7 12. ♗d2!? ♖b8

With this move, Black is trying to save a tempo for executing his main plan with ...b7-b5.

12... ♖e8 is Game 11 above.

13.a4



13...a6



WEAPON: If 13... ♖e7, 14. ♗e1!?
 ♗xc3 15. ♗xc3!? (15.bxc3
 ♖xe4 16.c4☞ CapNemo-
 War Games, Internet 2007)
 15... ♖xe4 16. ♗g5!.

14.a5!?

This well-known blockade is very useful, since it reduces Black's possibilities of counterplay with the advance ...b7-b5.



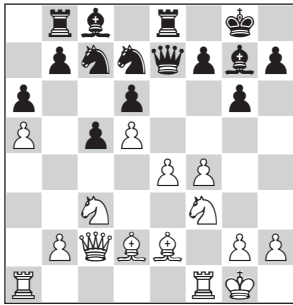
WEAPON: I have also played the direct 14. ♗e1!?. See Game 13 (next).

14...b5



WEAPON: In the case of 14... ♖e8 we have: 15. ♖c2 (alternatively, 15. ♗e1!? b5 (15... ♗b5? 16. ♗xb5 axb5 17. ♗h4!± Moskalenko-Iturrizaga Bonelli, Mollet rapid 2010) 16.axb6 (16.e5!?) 16... ♖xb6 17. ♖c2 (17.e5!?) 17... ♖b4 (17... ♖b8 18. ♗h4!?)

Moskalenko-C.Kovacevic,
Tortosa rapid 2006) 18. ♖h4
♙f6 19. ♖g3 (19. ♖g5!?) 19... ♗b6
20.e5 ♖e7 21. ♖ad1 ♙f5 22. ♖c1
♖a8 23. ♗h4 ♖d7 24.exd6
♙xd6 25.f5 ♖xg3 26.hxg3
♖xe2 27. ♗xe2 ♗bxd5 28. ♗c3
♖c6 29. ♖h6 ♖g4 30. ♗xd5
♗xd5 31. ♖xd5! Moskalenko-A.
Ivanov, Vladivostok 1997)
15... ♖e7 (15...b5 16.axb6 ♗xb6
17. ♖e1!?, 15... ♗f6 16. ♖ae1!? b5
17.axb6 ♖xb6 18. ♖c4! ♖g4
19.e5!↑ Sigrist-Dos Santos,
Americana 1999)

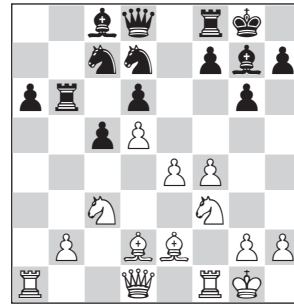


analysis diagram

16. ♖ae1! b5 17.axb6 ♖xb6
18. ♖c4 (18.e5!? dxe5 19. ♖c4±)
18... ♗b5 19.e5! dxe5 20.fxe5
♗xe5 21. ♗xe5 ♖xe5 22. ♗xb5
axb5 23.d6!+– Moskalenko-
Alonso Moyano, Barbera del
Valles 1999.

15.axb6 ♗xb6

WEAPON: During this event
in Yerevan, I taught the idea
of 9. ♖e2 followed by ♖d2
to my student, IM Stanislav
Savchenko, who soon started
applying it successfully in his
games: 15... ♖xb6



analysis diagram

16. ♖c2 and now:



TRICK: 16... ♗b5? 17. ♗xb5 axb5
18. ♖a5!.

16... ♖e7 (16... ♖e8 17. ♖fe1↑
S.Savchenko-Cherniak,
Leningrad 1989) 17. ♖fe1 ♗f6?
18. ♖c4 ♖g4 19.e5! ♖xf3
20.exf6 ♖xf6 21. ♗a4!+–
S.Savchenko-Totsky, Odessa
1991.

16. ♖e1!?

Played with the idea of 17. ♖h4!.

16. ♖c2!? is an alternative.

16... ♗d7?!

Confusion at the key moment.

It was necessary to look for
counterplay immediately:

A) If 16... ♖b7, 17.f5 (17. ♖f2!?) 17...
gxf5 18. ♗h4!↑;

B) 16...f5 17.e5! ♖b7 18. ♖h4 ♖d7
19. ♖c1!? ♖h8 20. ♖d1±;

C) Interesting was 16... ♗b5!/? with
a complicated game.

17. ♖h4! ♖e8 18. ♖c2

18. ♖d2!/? was even more precise.

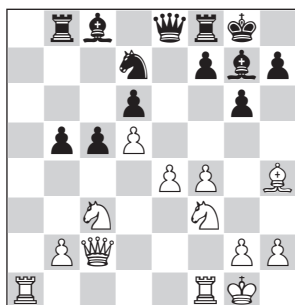
18... ♗b5

A traditional method that does not
work well in this situation.

A) 18... ♖b4 19. ♖ae1!/?;

B) 18...f5 19.exf5! gxf5 20. ♖ae1↑.

19. ♖xb5 axb5



20.e5!?

The typical e4-e5 break is White's primary goal in the middlegame. His initiative in the centre is more important than activity on the flanks.

20. ♖fe1! is a solid preparatory move.

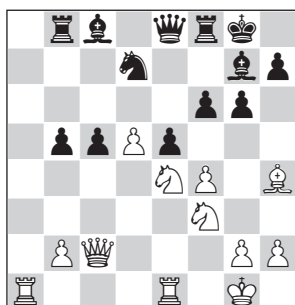
20...dxe5

20... ♗b6□.

21. ♖fe1

21. ♗e4! threatening 22. ♗d6!.

21...f6 22. ♗e4!↑



22... ♖d8?

The decisive error.

22... ♖f7 23.fxe5±.

23.fxe5 g5 24. ♗exg5! fxg5 25. ♗xg5

♖xg5 26. ♖xg5 ♗xe5 27. ♖a7 ♖f5

28. ♖xg7+!

Black resigned.

Game 13

Viktor Moskalenko 2543

Francisco Sanz Alonso 2400

Andorra la Vella 2006 (8)

1.d4 ♗f6 2.c4 c5 3.d5 e6 4. ♗c3 exd5
5.cxd5 d6 6.e4 g6 7.f4 ♖g7 8. ♖b5+
♗fd7 9. ♖e2 0-0 10. ♗f3 ♗a6 11.0-0
♗c7

In order to complete our study of this typical position, we will look at other attempts.

12.a4!?

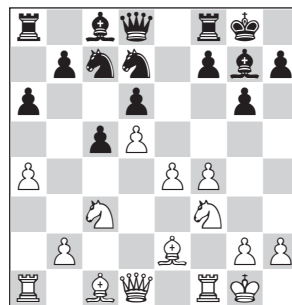


PUZZLE: This prophylactic move normally transposes to the lines 12. ♖d2 ♖e8 or 12... ♖b8 as in Games 11 and 12 above. However, there is also an extra idea – see the strong weapon on move 13.

12...a6

For 12... ♖e8 see Game 14 below.

12... ♗a6 13.f5!?



13. ♖d2



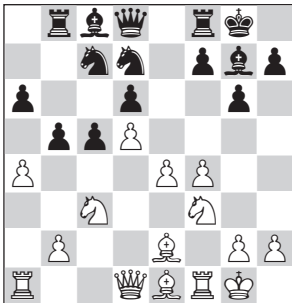
WEAPON: 13.f5! is another attacking resource which seems to work perfectly here: 13... ♗e5 14. ♖e1! (the transfer of the queen to the kingside) 14... ♖b8 15. ♖g3! ♗xf3+ 16. ♖xf3 ♖e5 17. ♖f4+-

Anagnostopoulos-Lazaridis,
Anogia 2018.

13... ♖b8 14. ♕e1!?

14.a5!? is Game 12 above.

14... b5



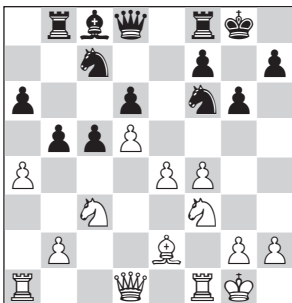
15. ♕h4

Following my predetermined plan.

🔪 **WEAPON:** However, in this position White should start with 15.e5! dxe5 and now 16. ♕h4 (16.d6! is similar) 16... ♕f6 (16... ♖e8 17.d6 ♘e6 18.axb5 axb5 19.fxe5 ♘xe5 20. ♘d5!↑) 17. ♕xf6 ♖xf6 18.d6 ♘e6 19. ♘d5 ♖g7 20.axb5! axb5 21. ♖a7! ♖h8 22. ♘xe5 ♘xe5 23.fxe5+- A.Aleksandrov-Hedman, Stockholm 1995.

15... ♕f6 16. ♕xf6 ♘xf6

16... ♖xf6 17. ♖d2 b4 18. ♘d1±.

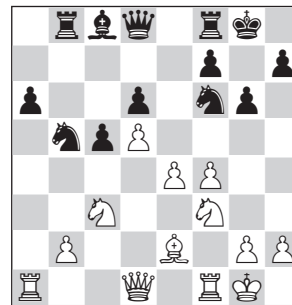


17.axb5!?

In the previous century I played 17.e5 b4!⇒ 18.exf6 bxc3 19.bxc3 ♖xf6 20. ♖d2∞ ♖b3 21. ♕c4! ♖b8 22.h3 ♕f5 23.g4 ♕d7 24. ♘g5 ♖fe8 25. ♖ae1 ♖xe1 26. ♖xe1 ♖e8 27. ♘e4 ♖h4 28. ♖f2! ♖xh3 29. ♘f6+ ♖g7 30. ♕f1 ♖xc3 31. ♘xe8+ ♘xe8 32.g5 ♕xa4 33. ♖e4 ♕d7 34. ♖e7 ♕a4 35.f5 ♖f8 36.f6 h6? 37. ♖e4 (37.gxh6!) 37... ♕d7 38. ♖h4 h5 39. ♖e1 ♖xe1 40. ♖xe1 ♕a4 41. ♕xa6 ♕b3 42. ♖e7 ♕xd5 43. ♕b5+- Moskalenko-Totsky, Moscow 1992.

17... ♘xb5

17... axb5 18.e5!?



18. ♕xb5

🔪 **WEAPON:** I missed the correct attack: 18.e5! ♘xc3 19.bxc3 dxe5 20.fxe5 ♘xd5 21. ♖c1! ♘e7 22. ♘g5!.

18... axb5 19. ♖e1!?

19.e5!?

19... ♖e8

19... b4!?!⇒.

20.e5 b4 21. ♘a4 dxe5 22.fxe5 ♘xd5

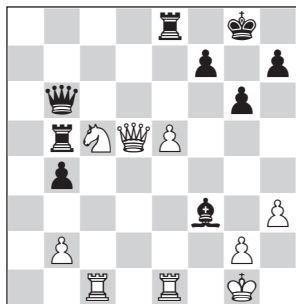
23. ♘xc5 ♕g4 24.h3 ♖b5 25. ♖c1

♖b6?

25... ♕xf3□ 26. ♖xf3 ♘c3! (26... ♖b6?

27. ♖f1!) 27. ♘d3 ♘d5=.

26. ♖xd5 ♕xf3



27. ♖d6!

27.gxf3 ♖d8 28.♖c4 ♖c8 29.e6
♖bxc5 30.exf7+ ♔g7=.

27... ♕a8

27... ♕c6 28.e6+-; 27...♖xd6
28.exd6±.

28. ♖xb6 ♖xb6 29. ♗d7 ♖c6 30. ♖xc6

♕xc6 31. ♗f6+ ♔f8 32. ♗xe8 ♔xe8

33. ♖d1 1-0

The value of this game (and the next one): we have discovered some additional advantages of the flexible move 12.a4!? – for example 13.f5!?

Game 14

Viktor Moskalenko 2555

Elmar Magerramov 2565

Rostov-on-Don 1993

1.d4 ♗f6 2.c4 e6 3. ♗c3 c5 4.d5 exd5

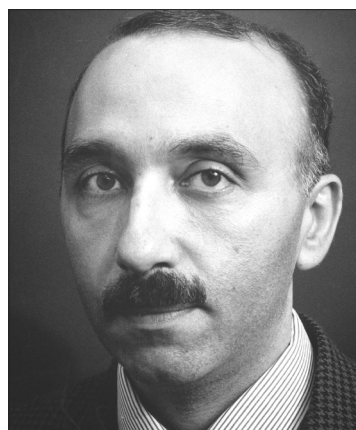
5.cxd5 d6 6.e4 g6 7.f4 ♕g7 8. ♕b5+

♗fd7 9. ♕e2 0-0 10. ♗f3 ♗a6 11.0-0

♗c7 12.a4!?

This is an alternative to 12.♕d2!?, but the plans connected with it are very similar. Possibly this advance is more reasonable now than on move 9, since it takes Black more time to take his knight to the b4-square: ...♗b8-a6-c7-a6-b4.

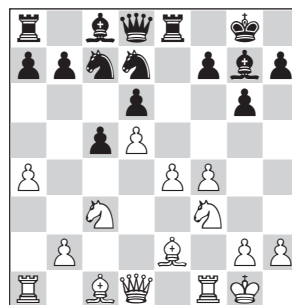
12... ♖e8



Azeri GM Elmar Magerramov: 'It seemed as if I was lost from the beginning...' In his youth, Magerramov helped Garry Kasparov to understand the complexities of the Modern Benoni System as Black.

12...a6 was seen in Game 13.

Remember: 12...♗a6?! 13.f5!.



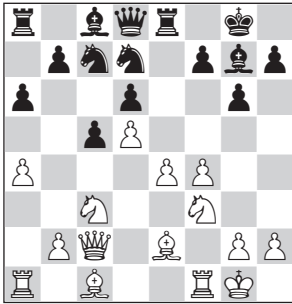
13. ♖c2

WEAPON: It is also possible to return to the idea of 13.♕d2!?. Then in case of 13...♕xc3?! 14.♕xc3 ♖xe4 (14...♗f6? 15.♗g5!) 15.♗g5 ♖e8 16.♕d3→ White has good possibilities of a kingside attack.

13... ♗f6

Remember: thus White wins a tempo: ♕b5+-♗fd7, ♕e2-♗f6.

 **WEAPON:** 13...a6





analysis diagram

14. ♘d2!? ♖b8 15. ♘e1! b5 16. e5!
dxe5 17. ♘h4↑


14. ♘d2 ♘g4 15. ♞ae1 ♖a6

One of the paramount problems for Black in the Taimanov Variation is where to put his ‘crazy’ knights!

 **WEAPON:** 15...a6 16.h3 (16.a5!?)±
16... ♘xf3 17. ♘xf3 b5 18.e5!↑;

 **WEAPON:** I believe 15... ♖d7 is somewhat passive. It allows White to obtain the initiative: 16. ♖g5 (16.f5!?, 16. ♖h1!?)

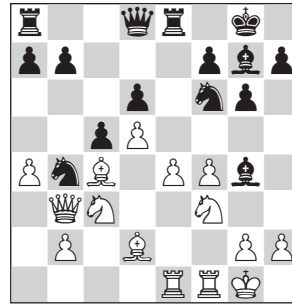
16... ♘xe2 17. ♞xe2 c4 18. ♘e3 a6
19. ♞d2 (19.e5! dxe5 20.f5±) 19...
b5 20.e5! dxe5 21.f5 ♖f6 22.d6
b4 23. ♖ce4 ♖cd5 24.fxg6
hxg6 25. ♖xf7! ♞d7 26. ♖fg5+–
Moskalenko-Alonso Rossell,
Banyoles 2006;

 **WEAPON:** Five years later the evaluation remains unchanged: 15... ♖b8 16.h3
♘xf3 17. ♘xf3 ♖d7 18.g4
♖a6 19. ♖b5 ♖b4 20. ♞b3
♞b6 21. ♖g2 ♖c6 22.a5 ♖xa5
23. ♞a4 a6 24. ♖xd6 ♞xd6
25.e5+– Avila Gimenez-
Alonso Rosell, Barcelona 2011.

16. ♘c4

 **WEAPON:** 16.e5!?


16... ♖b4 17. ♞b3



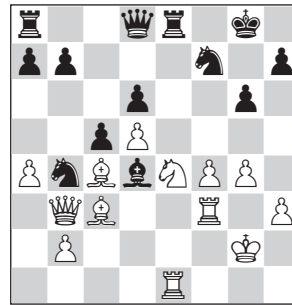
All ready to fire away with e4–e5!

17... ♘xf3 18. ♞xf3 ♖g4 19.g3!±

This strong preventive move avoids all counterplay along the dark squares. White is much better.

 **WEAPON:** 19.e5!? dxe5 20.d6±.
19...f5

Finally Black starts to look for new resources! But it’s already too late.
20.h3 fxe4 21. ♖xe4 ♖h6 22.g4! ♖f7
23. ♖g2 ♘d4 24. ♘c3!+–



24... ♞h4 25. ♘xd4! ♞xe1 26. ♖f6+ ♖h8 27. ♘c3

A spectacular position.

27... ♞e2+ 28. ♘xe2 ♞xe2+ 29. ♞f2 ♞e7
For example: 29... ♞e3 30.g5! ♞d3
31. ♞d2 ♞f5 32. ♞c4+–.

30. ♞c4 1-0

There is no defence against 31. ♞e2.

A check on h4 – 9.♔e2 ♖h4+ 10.g3 ♖e7/♖d8

Game 15

Stanislav Savchenko 2505

Evgeny Pigusov 2550

Norresundby 1992 (4)

1.d4 ♘f6 **2.c4** c5 **3.d5** e6 **4.♘c3** exd5
5.cxd5 d6 **6.e4** g6 **7.f4** ♔g7 **8.♔b5+**
♘fd7 **9.♔e2** a6

For 9...♖h4+ see Games 16 and 17.

10.a4 ♖h4+

The main idea of this check is to weaken the white pawn structure on the kingside. However, the black queen wastes important tempi.

11.g3 ♖d8

♘ PUZZLE: 11...♖e7 transposes to the next games.

12.♘f3 0-0 **13.0-0** ♔e8 **14.♔g2!**?

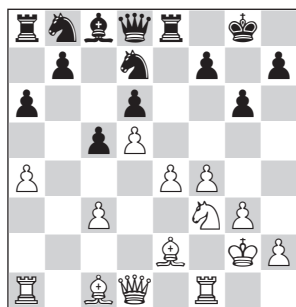
The main move.

14.♔e1!? is an alternative.

14...♘f8

Looking for a way to finish development.

♘ WEAPON: 14...♔xc3 15.bxc3



analysis diagram

15...♘f6 (15...♔xe4 16.♔d3 ♔e8
17.f5→) 16.e5 (16.c4!?) 16...dxe5
17.fxe5 ♘xd5 18.♘g5!

14...b6?! is too slow: 15.♔c4 ♔b7
16.♔e1± Hillarp Persson-E.Berg,
Oslo 2015.

15.e5!?

The most aggressive reaction. White immediately begins a dangerous attack in the centre.

♘ WEAPON: 15.h3!? ♘bd7

16.♔e1± is a solid set-up for White.

15...♔g4?!

Actually it is not easy to find a good defence here.

It was possible to follow up with the cold-blooded 15...♘bd7!? 16.♘e4!?!↑.

16.♘g5!

Now the initiative is in White's hands.

16...♔xe2 **17.♖xe2** f6

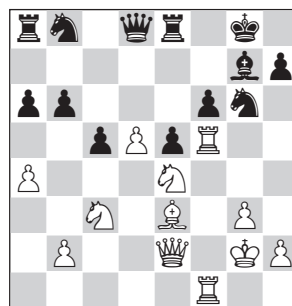
17...dxe5 18.f5!+-; 17...f5 18.e6!?!±.

18.♘ge4 dxe5 **19.f5!**

A typical blockade. Black no longer has any active counterplay.

19...gxf5 **20.♔xf5** ♘g6 **21.♔e3** b6

22.♔af1+-



22...♘d7 **23.d6** ♘gf8 **24.♘d5** ♘e6
25.♖g4 ♔h8 **26.♔h5!** ♔a7 **27.♖h4**
♘ef8 **28.♔h6** ♔xh6 **29.♔xh6** ♔e6
30.♔f5 ♖e8 **31.♘c7** ♔xc7 **32.dxc7**
1-0