

# Contents

Explanation of symbols. . . . .	9
Preface . . . . .	11

## Chapter 1

### Open Games

#### Centre Game, Danish Gambit and rare lines

1.e4 e5 2.d4 exd4. . . . .	12
Rare Lines . . . . .	13
Centre Game . . . . .	15
Danish Gambit . . . . .	18

#### King's Gambit

1.e4 e5 2.f4 . . . . .	21
King's Gambit Declined . . . . .	21
Falkbeer Counter-Gambit. . . . .	27
King's Gambit Accepted . . . . .	28

#### Bishop's Opening

1.e4 e5 2.♗c4 . . . . .	43
-------------------------	----

#### Vienna Game

1.e4 e5 2.♘c3 . . . . .	46
-------------------------	----

#### Latvian Gambit and rare replies to 2.♘f3

1.e4 e5 2.♘f3 f5 . . . . .	54
----------------------------	----

#### Philidor Defence

1.e4 e5 2.♘f3 d6 . . . . .	58
----------------------------	----

#### Petroff Defence

1.e4 e5 2.♘f3 ♘f6 . . . . .	63
-----------------------------	----

#### Ponziani Opening

1.e4 e5 2.♘f3 ♘c6 3.c3 . . . . .	69
----------------------------------	----

#### Scotch Game

1.e4 e5 2.♘f3 ♘c6 3.d4 exd4 4.♘xd4 . . . . .	72
--	----

#### Scotch/Göring Gambit

1.e4 e5 2.♘f3 ♘c6 3.d4 exd4 4.♗c4 (4.c3) . . . . .	76
--	----

#### Italian Game and related openings

1.e4 e5 2.♘f3 ♘c6 3.♗c4 ♗c5. . . . .	80
Openings related to the Italian Game . . . . .	81

Italian Game .....	85
<b>Evans Gambit</b>	
1.e4 e5 2.♘f3 ♘c6 3.♙c4 ♙c5 4.b4 .....	91
<b>Two Knights Defence</b>	
1.e4 e5 2.♘f3 ♘c6 3.♙c4 ♘f6.....	96
<b>Four Knights Game and related openings</b>	
1.e4 e5 2.♘f3 ♘c6 3.♘c3 ♘f6 .....	107
<b>Ruy Lopez</b>	
1.e4 e5 2.♘f3 ♘c6 3.♙b5 .....	113

## Chapter 2

### Semi-Open Games

#### Minor openings after 1.e4

##### Owen Defence

1.e4 b6.....	138
--------------	-----

##### Nimzowitsch Defence

1.e4 ♘c6.....	139
---------------	-----

##### Scandinavian Defence

1.e4 d5.....	142
--------------	-----

##### Alekhine Defence

1.e4 ♘f6 .....	151
----------------	-----

##### Pirc-Ufimtsev Defence

1.e4 d6 2.d4 ♘f6 3.♘c3 g6.....	155
--------------------------------	-----

##### Caro-Kann Defence

1.e4 c6.....	167
--------------	-----

##### French Defence

1.e4 e6.....	181
--------------	-----

##### Sicilian Defence

1.e4 c5.....	211
--------------	-----

## Chapter 3

### Closed Games

#### Queen's Pawn Opening

1.d4 d5 .....	263
---------------	-----

#### Queen's Gambit: rare lines

1.d4 d5 2.c4 .....	275
--------------------	-----

#### Chigorin Defence

1.d4 d5 2.c4 ♘c6.....	279
-----------------------	-----

<b>Albin Counter-Gambit</b>	
1.d4 d5 2.c4 e5 .....	282
<b>Queen's Gambit Accepted</b>	
1.d4 d5 2.c4 dxc4 .....	284
<b>Slav Defence</b>	
1.d4 d5 2.c4 c6 .....	289
<b>Semi-Slav Defence</b>	
1.d4 d5 2.c4 c6 3.♗f3 ♗f6 4.♗c3 e6 .....	298
<b>Catalan Opening</b>	
1.d4 d5 2.c4 e6 3.♗f3 ♗f6 4.g3 .....	302
<b>Queen's Gambit Declined</b>	
1.d4 d5 2.c4 e6 3.♗c3 .....	306

## Chapter 4

### Semi-Closed Games

#### Rare and minor Indian lines

1.d4 .....	319
------------	-----

#### Dutch Defence

1.d4 f5 .....	328
---------------	-----

#### Trompowsky Attack

1.d4 ♗f6 2.♙g5 .....	341
----------------------	-----

#### Budapest Gambit

1.d4 ♗f6 2.c4 e5 .....	342
------------------------	-----

#### Benoni Systems

1.d4 ♗f6 and 2...c5, 1.d4 c5 .....	346
------------------------------------	-----

#### Modern Benoni

1.d4 ♗f6 2.c4 c5 3.d5 e6 4.♗c3 exd5 5.cxd5 d6 .....	350
---	-----

#### Volga Gambit

1.d4 ♗f6 2.c4 c5 3.d5 b5 .....	354
--------------------------------	-----

#### Grünfeld Indian Defence

1.d4 ♗f6 2.c4 g6 3.♗c3 d5 .....	357
---------------------------------	-----

#### King's Indian Defence

1.d4 ♗f6 2.c4 g6 3.♗c3 ♙g7 .....	361
----------------------------------	-----

#### Queen's Indian Defence

1.d4 ♗f6 2.c4 e6 3.♗f3 [b6] .....	370
-----------------------------------	-----

#### Nimzo-Indian Defence

1.d4 ♗f6 2.c4 e6 3.♗c3 ♙b4 .....	379
----------------------------------	-----

## Chapter 5

### Flank Games

#### Rare lines

1.c3 / 1.g4 / 1.g3 / 1.♘c3 ..... 391

#### Sokolsky Opening

1.b4 ..... 395

#### Nimzowitsch-Larsen Opening

1.b3 ..... 398

#### Bird's Opening

1.f4 ..... 400

#### Réti Opening and King's Indian Attack

1.♘f3 ..... 405

#### English Opening

1.c4 ..... 414

Index of players ..... 445

Bibliography ..... 457

About the authors ..... 459

## Preface

This is an updated and revised edition of the Russian book *Pobeda v debyute. 700 primerov bystrykh pobed* (Victory in the Opening. 700 Examples of Quick Wins, Moscow 2016).

The main task of any chess player in the opening is to ensure the proper orchestration of his forces. That is the key idea of the present book.

The games, which are all less than 20 moves long, are sorted by opening. This makes it possible to use the book as a practical opening manual. After all, each opening has its own intrinsic set-ups of pieces and pawns, its typical vulnerable points and weaknesses, favourite deployment plans, and also typical mistakes.

The game notes offer brief up-to-date recommendations about the opening at hand. The reader will also improve his understanding of general opening principles while studying these practical examples.

Winning in the Chess Opening features games by players of different levels, from World Champions to pure amateurs. Quite understandably, the nature of the games and the mistakes made are not identical. You will see magnificent works of art along with games decided by errors or even blunders. However, the way the opponents utilise the latter is, though often simple, nonetheless instructive. In our opinion, such diversity is justified as it increases the practical value of the book.

From time to time, the commentaries may include conventional symbols along with the text, thus making it possible to give all the necessary information while keeping the size of the book within reasonable bounds.

We hope that this work proves useful for every aspiring chess player.

Nikolay Kalinichenko  
Kirill Kuznetsov  
February 2018

## CHAPTER 2

# Semi-Open Games

## Minor openings after 1.e4

There are a lot of established openings for Black after 1.e4, but some other moves, even if rarely employed, are seen from time to time, even in top-level chess. One notable example is 1.e4 a6!?, used by Tony Miles to beat the then World Champion Anatoly Karpov in Skara 1980.

Still, White can hope for a certain opening advantage, with correct play, against each of them.

Game 214      B00

**Bojan Vuckovic**

**Uros Petakov**

Serbia tt 2014 (5)

### 1.e4 a6!?

This rare move is actually quite playable, often leading to known openings with a transposition of moves.

### 2.d4 b5 3.a4

After 3.♘f3 ♙b7 4.♙d3 ♘f6?! (it was safer to start with 4...e6) 5.♖e2 (5.e5 ♘d5 6.♘g5 e6 7.♗f3 would have been rather annoying for Black) 5...e6 6.a4 c5 7.dxc5 ♙xc5 8.♘bd2 b4 9.e5 ♘d5 10.♘e4 ♙e7 11.0-0 ♘c6 12.♙d2 ♗c7, Black achieved an equal Sicilian-like position in the famous encounter Karpov-Miles, Skara 1980, and even managed to win in the end.

### 3...♙b7

There is nothing wrong with 3...b4.

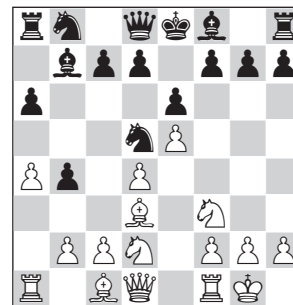
### 4.♘d2

4.axb5!? is another promising alternative, e.g. 4...♙e4 5.d5! (5.bxa6 can be met by 5...♘xa6, because g2 is potentially en prise) 5...e6 6.♘c3 ♙b4 7.♗d4 ♙xc3+ 8.♗xc3, attacking g7.

### 4...♘f6 5.e5 ♘d5 6.♘gf3

6.axb5 axb5 7.♖xa8 ♙xa8 8.♙xb5? is a typical error, which would be punished by 8...♘e3!.

### 6...b4 7.♙d3 e6 8.0-0



### 8...♘f4?!

Premature activity.

He should have developed first with 8...♙e7.

**9. ♖e4 ♜c8 10. ♘g5 f5?**

White's threat to attack everything with the queen sortie is best parried by 10...♘c6, and if 11.♜f3? nonetheless, then 11...♘xd4!

**11.exf6 gxf6 12. ♜f3 fxf5**

Or 12...♖xe4 13.♘gxe4, or 12...d5 13.♜xf4 fxf5 14.♜f6.

**13. ♖xb7 g4 14. ♜e4! d5 15. ♜xf4 ♜xb7 16. ♜f6**

Black resigned on account of 16...♗g8 17.♜xe6+.

## Owen Defence

**1.e4 b6**

Game 215 B00

**Guido den Broeder**

**Wolfgang Wegener**

ICCF-Cup5 cr 1981

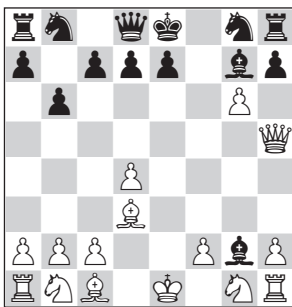
**1.e4 b6**

The Owen Defence is also playable, although it does not bring equality if White knows what to do.

**2.d4 ♖b7 3. ♖d3 f5?**

This almost loses by force, as White brilliantly proves in the present postal game.

**4.exf5! ♖xg2 5. ♜h5+ g6 6.fxf6 ♖g7**



If 6...♘f6, then 7.gxf5+! ♘xh5 8.♖g6#.

**7. ♜f5!!**

The key move. There is the small matter of the mate threat on f7.

**7...♘f6 8. ♖h6!!**

An absolutely brilliant follow-up.

**8... ♖xh6**

Or 8...0-0 9.gxf5+ ♖h8 10.♖xg7+ ♘xg7 11.♜g6+ ♖h8 12.♜xg2 (Della Morte-Lopez, Villa Martelli 2000).

**9.gxf5**

The triple attack on g6 can only be reduced to a double attack, which is fatal for Black anyway.

**9... ♖xh1 10. ♜g6+ ♖f8 11. ♜xh6+ ♖f7 12. ♘h3 ♜f8 13. ♖g6+!**

13.♜g6+ is sufficient, but it prolongs the game considerably: 13...♖e6 14.♘c3 d5 (14...♖d6!) 15.0-0-0 ♖e4 16.♘g5+ ♖d7 17.♘xe4 dxe4 18.♜f5+ ♖c6 19.♖xe4+ etc., as in Belov-Nagibin, Moscow 2006.

**13... ♖e6 14. ♜f4 d5 15. ♖f5+ ♖f7 16. ♘g5+ ♖e8 17. ♜xc7 1-0**

Game 216 B00

**Ju Wenjun**

**Salome Melia**

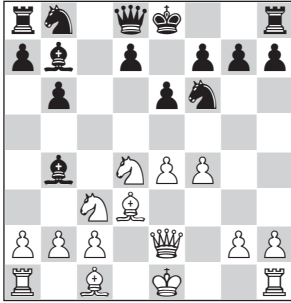
Riadh Wch blitz W 2017 (4)

**1.f4 b6 2.e4 ♖b7**

After f2-f4 Black has a safer version of the 1...b6 opening.

3. ♖c3 c5 4. ♗f3 e6 5. d4 cxd4 6. ♗xd4  
A typical Sicilian position has arisen.

6... ♙b4 7. ♙d3 ♗f6 8. ♖e2



8...d5?!

She should have started with 8... ♗c6 9. ♙e3 and only then 9... d5 10. e5 ♗e4, with a roughly equal game.

9. e5 ♗e4

After 9... ♗f6 10. ♙e3, White would obtain a clear edge thanks to her strong blockading knight on d4.

10. ♙xe4 ♙xc3+

The point is that 10...dxe4 is impossible here due to the reply 11. ♖b5+.

11. bxc3 dxe4 12. ♙a3

This version of the French Defence looks like an absolutely terrible idea for Black.

12... ♖d7 13. ♗d1 ♖a4 14. ♗b5 ♙d5 15. c4!

It's all over, as the bishop can't leave the d5-square because of mate by ♗c7.

15... a6 16. ♗c7+ ♗d8 17. ♗xa8 ♖xa3

18. cxd5 ♖a5+ 19. ♖d2 ♖xd2+

20. ♗xd2 exd5 21. ♗xb6

Black resigned.

## Nimzowitsch Defence

1. e4 ♗c6

One of the creative finds of grand maestro Aron Nimzowitsch (1886-1935), the famous chess pioneer. Black tries to enforce piece play from the first moves. According to our latest understanding, the Nimzowitsch Defence is hardly sufficient to give Black full-fledged counterplay, yet it is played from time to time, at least at master level, mainly because its theory has not been developed to great depth.

Game 217 B00

Dennis Drollinger 2208

Elmar Klotz 1640

St Ingbert 1988 (1)

1. e4 ♗c6 2. d4 d5 3. ♗c3 dxe4 4. d5  
♗e5 5. ♙f4 ♗g6 6. ♙g3 a6

Better is 6...c6 7. dxc6 ♖xd1+ 8. ♗xd1  
bxc6 9. ♗xe4.

7. ♙c4 ♗f6 8. ♗ge2 b5 9. ♙b3 ♙b7

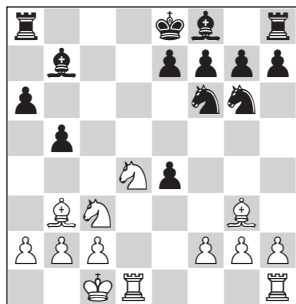
10. ♖d4 c6 11. dxc6 ♙xc6 12. 0-0-0

♖xd4 13. ♗xd4 ♙b7

13... ♙d7 loses to 14. ♗d5 ♗xd5

15. ♙xd5 ♗d8 16. ♗c6 ♗c8 17. ♗b8!





**14. dxb5!?** axb5 **15. bxb5** ♖c8?  
 15...e5! 16. ♖c7+ ♗e7 17. ♗xa8 ♙xa8  
 was necessary, with an unclear  
 game.  
**16. ♖c7+ ♞xc7 17. ♙xc7 e5 18. ♞d8+**  
 ♗e7 **19. ♞hd1 ♗f4 20. ♞b8**  
 Black resigned.

Game 218 B00

**Hans Tomson**

**Victor Panus** 2140

cr 1991/94

**1.e4 ♗c6 2.d4 d5 3. ♗c3 e5?! 4. ♙b5**  
 Modern theory considers the  
 variation 4.dxe5 d4 5. ♗d5 to be  
 strongest.

**4...dxe4!?** 5.d5 a6 6. ♙a4 b5 7. ♗xb5!?

The cold-hearted 7. ♙b3 ♗d4, which  
 leads to complex play, is another  
 option.

**7...axb5 8. ♙xb5 ♗ge7 9.dxc6 ♞xd1+**  
**10. ♗xd1 ♗f5 11.c3**

Or 11. ♙e3 ♗xe3+ 12.fxe3 ♙c5  
 13. ♗e2 ♙g4+ 14. ♗f2 f5, with  
 compensation.

**11... ♙c5 12.f3**

12. ♗e1!?

is an alternative that  
 deserves attention.

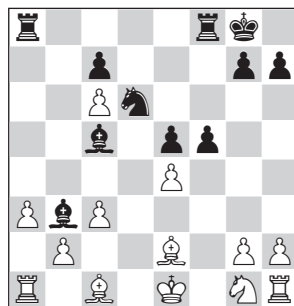
**12... ♗d6! 13. ♙e2**

If 13.c4, then 13... ♙e6.

**13... ♙e6 14.a3**

14. ♗c2 ♙xa2! and 14.fxe4 ♗xe4  
 are both poor for White, but 14.b4  
 ♙b6 15. ♙b2 ♙xa2 16. ♗c2 0-0 is a  
 possible choice, with double-edged  
 play.

**14... ♙b3+ 15. ♗e1 0-0 16.fxe4 f5!**



**17. ♗f3?**

White has brought things almost  
 to the boil with his imprecise play,  
 but he might still have retained  
 adequate chances to play on, thanks  
 to his extra material, by means of  
 17.exf5 e4! 18.g4! g6! 19. ♙h6 ♞f7,  
 when an exciting struggle will  
 follow.

**17...fxe4 18. ♗xe5 ♙f2+ 19. ♗d2 e3+**  
**20. ♗d3 ♞f5**

And now the only move, 21. ♗f3,  
 loses to 21... ♞d5+! 22. ♗d4 ♙c4+  
 23. ♗c2 ♞xd4 24.cxd4 ♙e2 and  
 25... ♞a6.

White resigned.

Game 219 B00

**John Foulger**

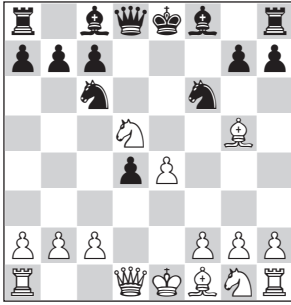
2160

**Frederic Dijon**

1920

Orange 1994 (8)

**1.e4 ♗c6 2.d4 d5 3. ♗c3 e5?! 4.dxe5**  
**d4 5. ♗d5 f5 6.exf6 ♗xf6 7. ♙g5**



**7... ♖xd5?**

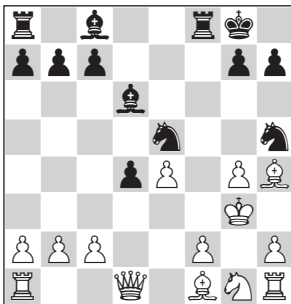
Spectacular but wrong.

**8. ♖xd8 ♖b4+ 9. ♔e2?**

9.c3! dxc3 10.exd5 cxb2+ 11. ♔e2 bxa1 ♖ 12. ♖xa1 ♖xd8 13. ♖xg7 wins.

**9... ♖f4+ 10. ♔f3 0-0 11. ♖h4 ♖d6**

**12.g4 ♖e5+ 13. ♔g3 ♖h5+**



**14.gxh5??**

After 14. ♔h3 ♖f4+ 15. ♔g3 ♖h5+ it's a perpetual.

**14... ♖f3+!**

If 15.e5, then 15... ♖xe5 mates.

White resigned.

Game 220      B00

**Mikhail Saltaev**                      2495

**Nikolay Vlassov**                     2465

Moscow 1995 (10)

**1.e4 ♖c6 2.d4 e5 3.dxe5 ♖xe5**

**4. ♖c3**

Or 4. ♖f3 ♖b4+ 5.c3 ♖xf3+ 6. ♖xf3 ♖c5 7.b4 ♖b6 8. ♖d2 ♖e7 9.a4 c6 10. ♖c4 ♖c7 11.e5 0-0 12. ♖g5 with the initiative for White (Gild. Garcia-Miles, Linares 1994).

**4... ♖c5**

If 4... ♖b4, then 5. ♖d4 ♖xc3+

6. ♖xc3.

**5. ♖f4 ♖g6 6. ♖g3 d6**

If 6... ♖f6?! 7.e5 ♖e7 8. ♖e2 ♖g8

9. ♖d5 ♖d8 10.e6 White has a nice attack.

**7. ♖d2 ♖f6 8.0-0 0-0 9.e5**

9. ♖c4 is equally good for White.

**9... ♖h5 10. ♖e4 ♖xg3 11.hxg3 ♖b6**

**12. ♖f3?!**

Also strong is 12.exd6.

**12... ♖g4**

12... ♖f5? won't do on account of

13. ♖f6+ (but not 13. ♖d3 dxe5) 13...

gxf6 14.exd6 cxd6 15. ♖h6 ♖e7

16. ♖d3 ♖d7 17.g4.

**13. ♖f6+!?**

Alternatively, 13.exd6 ♖e8 14. ♖b4

a5 15. ♖a4.

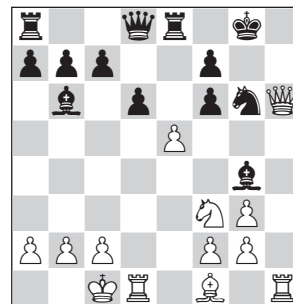
**13...gxf6 14. ♖h6 ♖e8 15. ♖xh7+**

**♔f8 16. ♖h6+ ♔g8?**

Better was 16... ♔e7 17.exd6+ (17.

exf6+ ♔d7 18. ♖b5+ c6) 17...cxd6

followed by 18... ♖e5.



**17. ♖c4! ♖e6 18. ♖h4 d5**

If 18...♗xh4, then 19.♖xh4, and mate on h8 cannot be prevented.

**19.♗xg6**

If 19...fxg6, then 20.♖h8+ ♔f7

21.♖h7#.

Black resigned.

Game 221 B00

**Vladimir Liberzon** 2445

**Paul Fenn**

Barcelona 1993 (2)

**1.e4 ♗c6 2.♗f3 d6 3.d4 ♖g4 4.♙e3**

4.d5 is strong here, e.g. 4...♗b8 (or

4...♗e5? 5.♗xe5 ♙xd1 6.♙b5+ c6

7.dxc6 ♖a5+ 8.♗c3 0-0-0 9.♗c4!

♖c7 10.♗d5 ♙xc2 11.♗xc7 ♔xc7

12.cxb7) 5.♗c3 ♗f6 6.♙e3 g6

7.♖d2! ♙xf3 8.gxf3 ♖g7 9.♙c4 0-0

10.0-0-0 ♗bd7 11.h4! ♗h5 12.f4

and White has a powerful attack (Votava-Blatny, Czechia tt 1993/94).

**4...♗f6 5.♗c3!?**

Also possible is 5.♗bd2 e5 6.d5 ♗e7 7.h3.

**5...e6?!**

Better was 5...e5.

**6.d5! ♗e5**

Or 6...exd5 7.exd5 ♗e5 8.♙b5+ with advantage to White.

**7.dxe6 ♗xf3+**

White also keeps the better prospects after 7...fxe6 8.♙e2 ♗xf3+ 9.♙xf3.

**8.gxf3 ♙xe6 9.♖d2 c6 10.f4 ♗g4**

**11.f5 ♙d7 12.♙f4 ♗e5 13.0-0-0**

**♖c7**

13...♙e7 14.♙g3 f6 15.f4 ♗f7 16.♙c4 brings no relief.

**14.♙g3! f6 15.f4 ♗f7 16.♙c4 ♗d8?**

16...♗h6 17.♖he1 0-0-0 would have allowed him to hold on some way or other.



**17.e5! ♙xf5**

17...d5 loses as well: 18.e6 ♙c8

19.♙xd5! cxd5 20.♗xd5 ♖d6

(20...♖c6? 21.♗xf6+) 21.♖c3 ♗c6

22.♗xf6+

**18.exd6 ♖d7 19.♖he1+ ♗e6**

**20.♙xe6 ♙xe6 21.f5**

Black resigned.

## Scandinavian Defence

### 1.e4 d5

It was not until the early 20th century that this rather old opening made its way into the master games. It happened through the efforts of Scandinavian chess players, primarily of Stockholm origin, who published the respective analyses, while the German maestro Jacques Mieses authored the first book on the Scandinavian in 1918.

In more recent times, the Scandinavian has changed considerably, and a number of new concepts have been introduced. Nonetheless, the general evaluation of this opening as being beneficial for White, because of his numerous active possibilities, has not changed much. The early queen sortie makes it possible for White to develop with tempo, which, coupled with the fact that Black does not have any strongholds in the centre, provides White with a long-lasting initiative and the overall better position.

The Scandinavian Defence is an occasional weapon of several top players, such as Magnus Carlsen and Viswanathan Anand. Grandmaster Sergei Tiviakov is a renowned expert in the Scandinavian and the 3...♖d6 line in particular.

Game 222      B01

**Paul Keres**

**Faltweber**

cr 1932

**1.e4 d5 2.♘f3?! dx4 3.♘g5 ♙f5**

**4.♘c3 ♘f6 5.♙c4**

5...♖e2 is best met with 5...♘c6

6.♖b5 ♖c8.

**5...e6 6.f3 exf3**

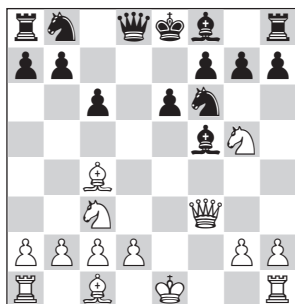
Or 6...♖d4 7.♖e2.

**7.♖xf3 c6?**

Black should have calmly retreated

with the bishop: 7...♙g6 8.♖xb7

♘bd7



**8.♘xf7! ♗xf7 9.♖xf5 ♖e7 10.♘e4**

**h6 11.♘c5 g6**

11...b6 loses to 12.♖xe6+ ♗e8 13.0-0.

**12.♖xe6+**

But not 12.♙xe6+? ♗g7 13.♖f2

♘bd7.

**12...♗e8 13.0-0 b5**

13...♘bd7 would not save Black either.

**14.♖c8+ ♖d8 15.♙e1+ ♙e7**

Black is also mated in the event of 15...♘e4 16.♙xe4+ ♙e7 17.♙xe7+ ♗xe7 18.♖e6+ ♗f8 19.♖f7#.

**16.♙xe7+ ♗xe7 17.♖e6+ ♗f8**

**18.♖f7#**

Game 223      B01

**Robert James Fischer**

**Karl Robatsch**

Varna ol 1962 (4)

**1.e4 d5 2.exd5 ♖xd5 3.♘c3 ♖d8**

**4.d4 g6 5.♙f4**

Also good is 5.♘f3 ♙g7 6.h3.

**5...♙g7**

The logical 5...♘h6 (planning ...♘f5 so as to control the d4-square) will be strongly met by 6.♙e5! f6 7.♙f4.

**6.♖d2 ♘f6**

After 6...♖xd4 7.♖xd4 ♙xd4 8.♘b5

♙b6 9.♘xc7+ ♙xc7 10.♙xc7 White

is for preference. Poor is 6...♙xd4?  
7.0-0-0 ♘c6 8.♙b5 ♙d7 9.♘d5! e5  
10.♘f3.

**7.0-0-0 c6 8.♙h6 0-0?**

Coming under fire immediately.  
Better was 8...♙xh6 9.♖xh6 ♙f5  
followed by ...0-0-0.

**9.h4 ♖a5**



**10.h5! gxh5**

Or 10...♘xh5 11.♙e2 ♘f6 12.♙xg7  
♙xg7 13.♖h6+ ♙g8 14.g4! ♜d8 15.g5  
♘h5 16.♙xh5 gxh5 17.♞xh5 ♙f5  
18.g6!.

**11.♙d3 ♘bd7**

If 11...♙f5?, then 12.♖g5.

**12.♘ge2 ♜d8 13.g4! ♘f8**

Or 13...♘g4 14.♞dg1 and 15.f3.

**14.gxh5 ♘e6 15.♞dg1 ♙h8**

**16.♙xg7+ ♘xg7 17.♖h6 ♜g8**

17...♘e6 18.♘f4!

**18.♞g5 ♖d8**

18...♘f5 19.♞xg8+ ♘xg8 20.♖f8 wins.

**19.♞hg1 ♘f5**

A bit more resilient is 19...♖f8  
20.d5! ♙d7 21.d6! ♘f5 22.♖xf8  
♞axf8 (22...♞xg8 23.♙xf5 h6  
24.dxe7 ♞fb8 25.♞g7 ♙xf5 26.♞xf7)  
23.♙xf5 ♞xg5 24.♞xg5 h6 25.dxe7  
♞b8 26.♞g3! ♙xf5 27.♞f3.

**20.♙xf5**

Black resigned.

Game 224 B01

**Lennard Löwe** 2008

**Oleg Boguslavsky** 2493

Frankfurt 2011 (2)

**1.e4 d5 2.exd5 ♖xd5 3.♘c3 ♖d6**

A trendy line.

**4.d4 ♘f6 5.♘f3 c6 6.♘e5 ♘bd7**

**7.♙f4 ♘d5 8.♙g3**

Also good is 8.♘xd5 ♖xd5 9.♘f3!.

**8...♘xc3 9.bxc3 ♖a3!?**

The standard continuation is

9...♘xe5.

**10.♖f3**

10.♖d2!? is probably stronger.

**10...♘xe5 11.♙xe5 ♙g4! 12.♖e3 f6**

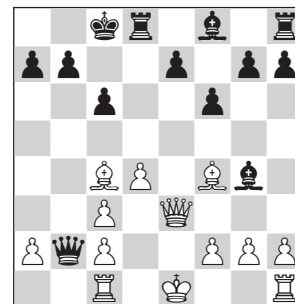
**13.♙f4?**

Better was 13.♙g3.

**13...♖b2 14.♞c1 0-0-0 15.♙c4?**

White should have played 15.♙e2

♙xe2 16.♖e6+ ♜d7 17.♙xe2, with  
chances for both sides.



**15...e5! 16.♙g3 ♙b4! 17.cxb4?**

Relatively better was 17.0-0, keeping  
some chances of salvation.

**17...♖xb4+ 18.c3 ♖xc4 19.dxe5?**

**♞d3**

Now 20.♖f4? won't do on account of  
20...♞d1+ 21.♞xd1 ♖e2#. However,  
other moves lose as well.

White resigned.

Game 225 B01

**Dusan Baric**  
**Branko Hrelja**

Bled 1992 (1)

**1.e4 d5 2.exd5 ♖xd5 3.♗c3 ♖a5**  
**4.♗f3**

4.d4 is more popular.

**4...♙g4**4...♗c6 5.♙b5 ♙d7 6.0-0 a6 7.♙c4  
e6 8.d4 0-0-0 is not bad here, with  
approximate equality.**5.h3 ♙h5 6.♙c4 ♗f6 7.g4 ♙g6 8.d3!**  
**h6?**

Stronger is 8...c6 9.♙d2 ♖c7.

**9.♙d2 c6**

Now this comes too late.

**10.♗d5 ♖d8 11.♗f4! ♙h7 12.♗e5**  
**e6?**Black could stay in the game with  
12...♙g8 13.♖e2 ♗bd7 (but not  
13...e6 14.♗xe6! fxe6 15.♗g6 ♖h7  
16.♗xf8 ♖xf8 17.♙b4+!) 14.0-0-0  
♗xe5 15.♖xe5.**13.♖e2 ♗d5**

Otherwise, 14.♗xf7 is strong.

**14.♗xf7**Still! The simple 14.♗xd5 cxd5  
15.♙b5+ ♖e7 16.♖f3 also wins.**14...♗xf4**

14...♖xf7 15.♖xe6#

**15.♙xf4 ♖f6 16.♗xh8 ♖xf4****17.♖xe6+ ♙e7 18.♖c8+**

Black resigned because of 18...♙d8

19.♙f7+ ♖e7 20.♖e6+ ♖f8 21.♖e8#.

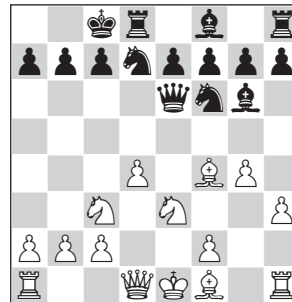
Game 226 B01

**Alexander Alekhine**  
**A. Schroeder**

New York sim 1929

**1.e4 d5 2.exd5 ♖xd5 3.♗c3 ♖a5**  
**4.♗f3 ♙g4**It's better to play 4...c6 at once to  
provide a retreat for the queen.**5.h3 ♙h5 6.d4 ♗f6 7.g4 ♙g6 8.♗e5**  
**♗bd7 9.♗c4 ♖a6**

But not 9...♖b4? 10.a3.

**10.♙f4 ♖e6+ 11.♗e3 0-0-0?**Black had to choose between 11...c6  
and 11...♗b6.**12.d5 ♖b6 13.♗c4 ♖b4 14.a3 ♖c5**  
**15.♙e3**

Black resigned.

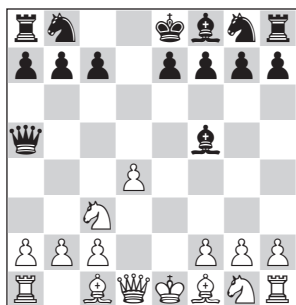
Game 227 B01

**Eric Prié** 2470  
**D. Rodriguez** 1630

Réunion 1997 (1)

**1.e4 d5 2.exd5 ♖xd5 3.♗c3 ♖a5**  
**4.d4 ♙f5?**

Emanuel Lasker insisted that the knights be developed prior to the bishops. Correct is 4...♘f6.



**5. ♖f3! c6**

5...♘c6 6.♙b5 could hardly suit Black, but it was maybe better to retreat with the bishop on c8.

**6. b4 ♖xb4 7. ♖b1 ♖a5**

If 7...♖xd4, then 8.♖xf5 ♖xc3+ 9.♙d2 e6 10.♖xf7+! ♘xf7 11.♖xb7+ ♙e7 12.♙xc3, and White is much better.

**8. ♖xb7 ♙e4 9. ♖g3 ♘d7 10. ♙d2**

**♙g6 11. d5 ♖c8 12. dxc6 ♖e5+**

**13. ♙e2!**

Black resigned due to the following sample line: 13...♖xc6 14.♖xe5 ♘xe5 15.♖b8+ ♘d7 16.♖xf8

Game 228      B01  
**Daniel Gutierrez Oliveras**      2296  
**Francisco Martin Perez**      1829

Las Palmas 2015 (9)

**1. e4 d5 2. exd5 ♖xd5 3. ♘c3 ♖a5**

**4. d4 ♘f6 5. ♙d2**

A possible, albeit too unambitious, a move. Black will withdraw the queen sooner or later anyway, when the bishop will be quite passive on d2.

**5...c6 6. ♙c4 ♖d8**

More popular, and more natural, is 6...♖c7 or 6...♖b6 7.♘f3 ♙f5. 7...♖xb2?! 8.♖b1 ♖a3 9.♖e2 is dubious, as Black's extra pawn does not compensate for his development lag.

**7. ♘f3 ♙f5 8. ♘e5!?**

Played quite aggressively. White prepares to castle queenside and start an onslaught on the kingside, thus making use of the bishop's shaky position on f5. Also possible is 8.♖e2, following the same idea, but with the d4-pawn still alive, e.g. 8...e6 9.0-0-0.

**8...e6 9. ♖e2 ♙e7?**

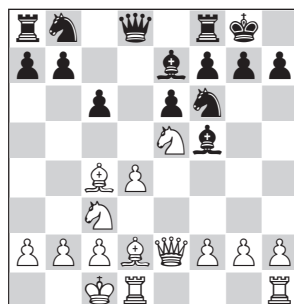
The principal reply is 9...♖xd4 10.0-0-0 ♘bd7 11.♘xd7 ♘xd7 12.♙e3: White has powerful initiative for just a pawn. However, Black's position is solid enough.

**10.0-0-0**

The immediate 10.g4 is good too.

**10...0-0?**

This natural move is losing, as is 10...h6? 11.g4 ♙h7 12.♘xf7!. He should have secured the e4- and d5-squares for his bishop by means of 10...b5!? 11.♙b3 a5! 12.a4 b4.



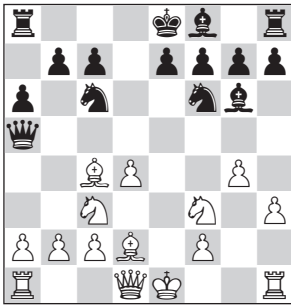
**11.g4 ♙g6 12.h4 ♖xd4**

It's already too late for 12...b5  
13.♙b3 b4 14.h5! and White's attack  
should prove lethal.

**13.h5 ♖e4 14.♙f4 ♙d3 15. ♖f3**  
**♜xc4 16.♗xc4 ♙xc4 17.h6 g6**  
**18.♙g5**  
Black resigned.

Game 229 B01  
**David Glueck** 2332  
**Hugh Myers** 2187  
St Paul 1982 (5)

**1.e4 d5 2.exd5 ♖xd5 3.♗c3 ♖a5**  
**4.d4 ♗f6 5.♗f3 ♙g4 6.♙e2 ♗c6 7.h3**  
**♙h5 8.g4 ♙g6 9.♙d2 a6 10.♙c4**



**10...♗xd4?**

Winning a pawn but coming under  
severe fire. It was better to confine  
himself to 10...♖b4 or 10...♖b6

11.♗a4 ♖a7 12.♙e3 ♖d8!  
**11.♗xd4 ♖c5 12.♖e2 ♖xd4**  
**13.0-0-0 ♗e4 14.♗d5 ♖c5 15.♙b4**  
**♖c6 16.h4 f6?**

Equally hopeless was 16...♗xf2  
17.♗xe7 ♖e4 18.♖xf2 ♙xe7 19.♖he1.  
Black could have retained feeble  
chances for a draw with 16...0-0-0  
17.h5 e6 18.♙xf8 exd5.  
**17.h5 ♗xf2 18.hxg6 ♗xh1 19.♗xc7+!**

If 19...♖xc7, then 20.♙f7#. Black  
resigned.

Game 230 B01  
**Sergey Rublevsky** 2657  
**Valery Popov** 2545  
St Petersburg 2001 (9)

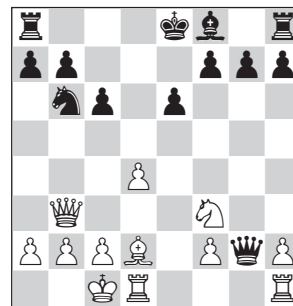
**1.e4 d5 2.exd5 ♖xd5 3.♗c3 ♖a5**  
**4.♗f3 ♗f6 5.d4 c6 6.♙c4 ♙f5**  
**7.♙d2 e6 8.♗d5 ♖d8 9.♗xf6+ ♖xf6**  
**10.♖e2 ♗d7**

After 10...♙g4 11.d5 ♙xf3 12.gxf3  
cxd5 13.♙xd5 ♗d7 14.0-0-0 ♙a3  
15.c3 0-0 16.♙e4 ♙c5 17.♖hg1!

White has an edge.

**11.0-0-0 ♗b6 12.♙d3 ♙xd3**  
**13.♖xd3 ♖g6**  
Preferable was 13...♙d6.  
**14.♖b3 ♖xg2?**

Black had to complete his  
development first.



**15.♖hg1 ♖h3**  
Or 15...♖xf2 16.♖d3.  
**16.♖g3 ♖f5 17.♗e5 ♙e7 18.♖f3**  
**♖e4 19.♖xf7 ♖d5**  
If 19...♖xd4, then 20.♖xe7+ ♙xe7  
21.♙g5+ and wins.  
**20.c4**  
Black resigned.